

EcoWash EWR-60

60-lb Capacity Rigid Mount/200 G-Force Coin Washer/Extractor

Features and Benefits:

- Coin or Card Ready
- Inverter Driven Motor
- Heavy-Duty Structural Tube Construction
- Stainless Steel Cabinet
- Easy to Program and Easy to Use Controls
- Load Imbalance Detection Before Spinning
- Large, Convenient Supply Dispenser
- Flexible Water Level Settings
- Ergonomic, Easy-Grip Door Handle
- 10 Year Manufacturer's Warranty*

Why Purchase ADC EcoWash?



EWR-60 Coin Washer/Extractor

Rugged Structural Tube Construction

EcoWash rapid spin washer/extractors are constructed with a structural tube design frame in combination with a heavy-duty cast aluminum counter weight to provide superior strength and maximum stability throughout the wash cycle.

Durable Door Safety Lock and Handle

The durable ergonomic design of the door handle combined with our Easy Lock™ door lock provides maximum convenience and safety.

Large, Convenient Supply Dispenser

Easy to use, this large supply dispenser allows you to conveniently load your detergent, bleach and fabric softeners before starting your wash cycle.

10 Year Manufacturer's Warranty

ADC's EcoWash machines carry a 10 year manufacturer's warranty assuring you've invested in superior performance, quality, durability and reliability.

Your local ADC independent authorized distributor



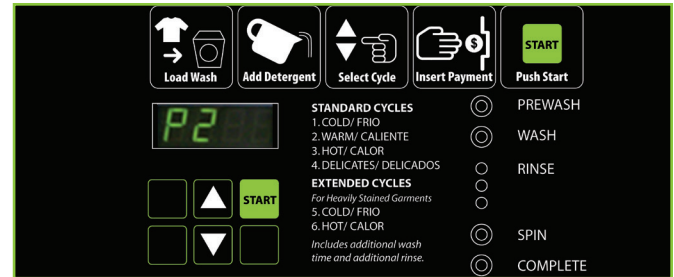
*10 year warranty limited to frame, tub, cylinder and cylinder's shaft, seals, bearings and bearing housing.

www.adclaundry.com

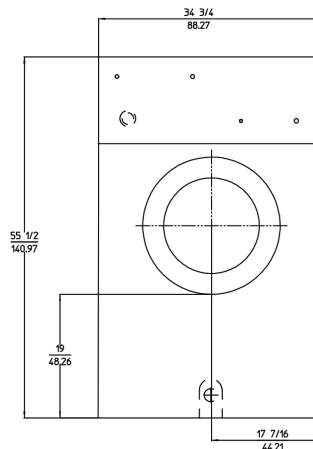
EcoWash EWR-60

200 G-Force Rapid Spin Washer-Extractor	
Features	EWR-60
DRUM	
Load Capacity (lb/kg)	60 lb / 25 kg
Drum Volume (cu. ft./liter)	8.82 cu ft / 250 L
Drum Diameter (in/mm)	27-9/16" / 70.00 cm
Drum Depth (in/mm)	26-3/8" / 67 cm
DIMENSIONS	
Width (in/mm)	34-3/4" / 88.27 cm
Depth (in/mm)	41-5/8" / 105.73 cm
Height (in/mm)	55-1/2" / 140.97 cm
Weight (lb/Kg)	705 lb / 319.78 kg
DIMENSIONS WITH PACKAGING	
Crated Width (in/mm)	36-1/2" / 92.71 cm
Crated Depth (in/mm)	49" / 124.46 cm
Crated Height (in/mm)	64-1/2" / 163.83 cm
Crated Weight (lb/Kg)	765 lb / 347.00 kg
DOOR	
Height to Bottom of Door (in/mm)	19" / 483
Door Opening Diameter (in/mm)	14-3/4" / 375
POWER	
Motor	3 kW
Heating (Electric Heated Model)	18 kW
Maximum Power (Electric Version)	21 kW
CONNECTIONS	
Water Inlet (in/mm)	3/4" / 19.05 cm
Drain (in/mm)	3" / 76.2 cm
CYLINDER SPEED	
Washing speed (r.p.m.)	47
Spinning speed (r.p.m.)	714
G-Force	200
FLOOR LOADING	
Static Floor Load	678 lb / 3,2 kN
Dynamic Floor Load	225 lb / 1 kN
Maximum Vertical Load	944 lb / 4,2 kN
Dynamic Load Frequency (Hz)	11.7
G Factor	200
OPTION HEAT SOURCES	
Steam Inlet (in/mm)	1/2" / 1.27 cm
Electric	18 kW

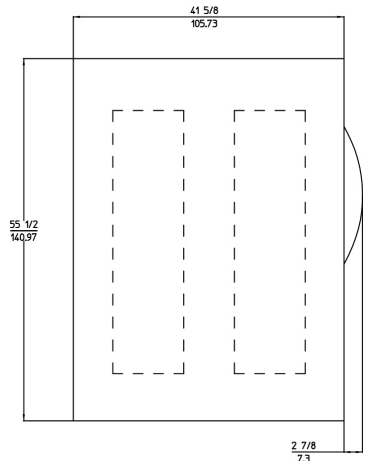
* one wash, two rinse cycles



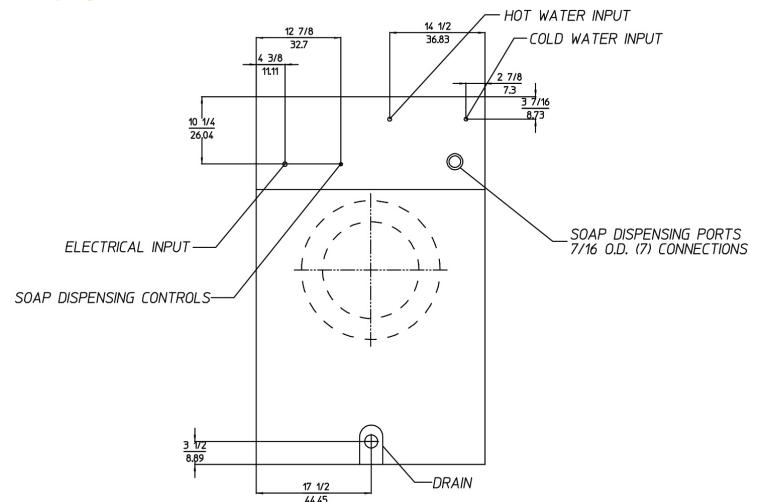
FRONT VIEW



SIDE VIEW



BACK VIEW



P/N 450637 REV 09/17/15

88 Currant Road Fall River, MA 02720-4781 • 508.678.9000 • Fax: 508.678.9447 • Email: sales@amdry.com

* Specifications are subject to change without notice or obligation. Contact ADC for dimensions not shown or for clarification.

www.adclaundry.com